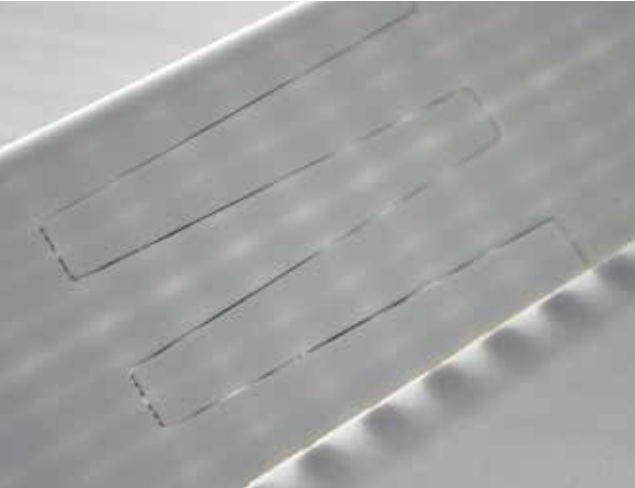


## BRECO® PinLock



Angst+Pfister has a leading heritage of technical evolution and innovation.

As engineering experts in drive technology components, we strive to provide our customers with innovative design parts to improve performance, increase efficiency and decrease costs.

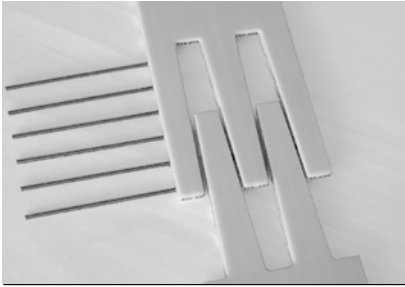
The BRECO® PinLock is a simple and fast assembly timing belt connection that demonstrates high-quality workmanship and outstanding running properties even at first glance. The optimised finger shape ensures equal load distribution in every cross section, thereby allowing for a high load-bearing capacity of the connection. The precise water-jet-cut finger contours guarantee both ends of the belt can be easily joined during on-site assembly and ensure quiet, conformal running.

The CNC-milled bore paths are ultra-straight and the rust-proof threaded pins are tightened using a cordless screwdriver, which makes assembly extremely simple. The BRECO® PinLock is a secure timing belt connection that can be used several times and is also suitable for coated timing belts and timing belts with welded-on profiles.

Our highly qualified team of engineers is at your disposal to bring you at the forefront of belt drive design.

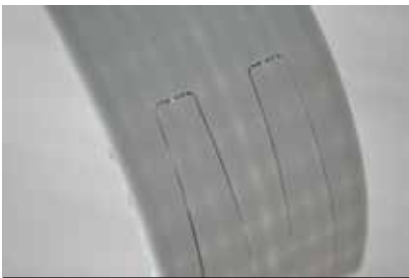
### **Our contact details**

Angst+Pfister AG, Switzerland  
Phone: +41 (0)44 306 61 11  
APSOdrive@angst-pfister.com  
www.angst-pfister.com



### Facts and Figures

- Produced by meter
- Cut, punched to length
- Drilled and fixed with pins



### Advantages

- A maximum-precision timing belt connection
- High level of flexibility and running smoothness
- An accurate and ultra-straight bore path for connection pins
- Can be assembled/disassembled several times
- Simple on-site assembly

### Available belt types and widths / permissible tensile forces

Belt width	(mm)	25	32	50	75	96	100
AT10 / T10 / T1/2"	(N)	300	400	600	900	1200	1200
AT20 / T20	(N)	500	600	900	1400	-	1800

