

Angst+Pfister – Your partner for coupling technology



Angst+Pfister is the right partner for any type of drive transmission application. Additionally to our engineering support and global logistics, we can provide you with top quality couplings that can be used in every industrial application with absolute reliability. Thanks to our extensive experience with drive technology, we can advise you to choose the right coupling according to your needs.

The mechanical drive train comprises individual units such as motor, gear unit and driven machine. The coupling connects these component assemblies. As well as the transmission of rotary motion and torque, other requirements may be taken into account when choosing the right coupling:

- Compensation for shaft misalignment where restorative forces are low
- Compensation for shaft displacement with low restorative forces
- Control of characteristic angular vibration frequency and damping
- Interruption or limitation of torque
- Noise insulation, electrical insulation

FLEXIBLE COUPLINGS

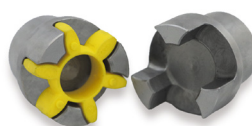
Flexible couplings are usually used to transmit torque from one shaft to another when the two shafts are slightly misaligned. In rotating shaft applications a flexible coupling can protect the driving and driven shaft components (such as bearings) from the harmful effects of conditions such as misaligned shafts, vibration, shock loads, and thermal expansion of the shafts or other components. This type of coupling is suitable especially for drives with uniform to average dynamic loads. Examples of applications are pump drives, ventilator drives or crane running gear.

Your benefits:

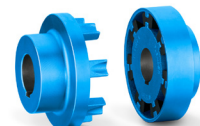
- Reliable transmission of torque in case of shaft misalignment (angular and parallel)
- Suitable for vibration damping and noise reduction
- Suitable for vertical mounting position
- Low degree of maintenance

Contact

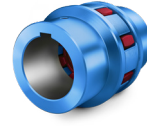
Angst+Pfister AG
info@angst-pfister.com
www.angst-pfister.com



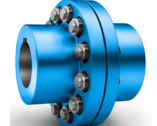
APSOdrive® flex



N-EUPEX



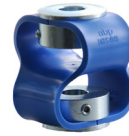
N-BIPEX



RUPEX

HIGHLY FLEXIBLE COUPLINGS

Because of their low torsional stiffness and damping capacity, highly flexible couplings are especially suitable for coupling machines with a highly non uniform torque pattern. These couplings are also suitable for connecting machines with high shaft misalignment. Examples of applications are pump drives or compressors drive.



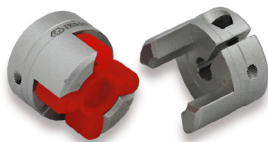
Double Loop

Your benefits:

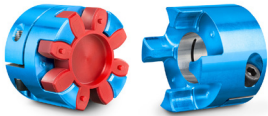
- Transmission of torque possible with nearly no circumferential backlash
- Compensates very large axial, radial and angular misalignment (e.g. on flexibly installed machines)
- Easy removal and fitting of flexible elements with Fenaflex
- Long durability even under extreme operating conditions with double loop



Fenaflex



APSOdrive® GS



BIPEX-S



SIPEX

BACKLASH-FREE COUPLINGS

With their high torsional stiffness and ability for angle preserving torque transmission our compact backlash-free couplings are able to achieve the highest positioning accuracy. We offer you two model ranges such as metal bellow and elastomer backlash-free couplings. The metal bellow coupling has high torsional stiffness and angle-preserving torque transmission. The elastomer coupling is vibration-damping and electrically insulating. After the easy installation they are almost completely maintenance- and wear-free and can therefore assure the durability of your drive applications. Examples of applications are drives with high position accuracy such as positioning drives, stepping motors and linear units.

Your benefits:

- Positioning accuracy
- Almost completely maintenance- and wear-free
- Low moment of inertia
- Suitable for a range of installation requirements to different hub versions, and very easy to install
- Very compact design

For technical support or for your individual consultation, please feel free to contact our product specialists: info@angst-pfister.com